



VISITING LANDMARK

There are many ways students and families can visit Landmark College — online and on campus. Visit our website to explore our open houses, daily visits, virtual sessions, and more at landmark.edu/visit.



The College for Students Who Learn Differently

19 River Road South | Putney, VT 05346

landmark.edu/admissions



LCFB09.21

Learn!ng **ABILITY**



INFORMATION
for **FAMILIES**



LANDMARK
COLLEGE

DYSLEXIA • ADHD • AUTISM • EXECUTIVE FUNCTION CHALLENGES

QUICK FACTS

1985

Founded as the first college dedicated to serving students who learn differently

450

Students from 38 states and 10 countries worldwide

6:1

Our low student/faculty ratio means a personal education for every student

209

Dedicated faculty and staff at LC — including nine great therapy dogs!

9 of 10

LC associate degree graduates who go on to pursue a bachelor's degree

125 acres

LC's sprawling private campus in southern Vermont offers the perfect setting for living and learning

1 in 2

Half of our students transferred to LC in search of a better college experience

11

Associate and bachelor's degree programs, plus a range of concentrations

36+

LC's clubs, intercollegiate and intramural athletic programs, and outdoor recreation options

Learn!ngABILITY

AT LANDMARK COLLEGE

No one better understands the potential of your student than you. Every day, you see the remarkable insights, talents — and challenges — that come with experiencing the world differently.

At Landmark College, our education focuses on helping students with learning differences (like dyslexia), ADHD, executive function challenges, and autism discover their true **Learn!ngABILITY**.

Our neurodivergent students build effective learning strategies and skills, develop their confidence, forge lifelong friendships, and discover academic success — often for the first time in their lives — in an open and welcoming environment.

The LC experience is transformational. We invite your family to experience us for yourself!

For the last three consecutive years, LC has been named **#1 Best Undergraduate Teaching College** and **#1 in Innovation–North** in *U.S. News & World Report's* Regional Colleges Ratings

**BEST
COLLEGES**

U.S. News

UNDERGRADUATE TEACHING
2022

**BEST
COLLEGES**

U.S. News

MOST INNOVATIVE
2022

Learn!ng **ABILITY**

Takes Many Forms at LC

Here are 10 ways our approach is unlike any other LD support program.

1



Multiple Academic Paths — Students can begin their educational journey with one of our many summer programs; **Online Dual Enrollment** in high school; one-year **Transition at College (TaC)** postgrad/gap track or **Bridge Experience**; or an associate or bachelor's degree. They can also complete their first semester or year online with LC's new **College START** program.

2



Diagnosis-Specific Supports — Our comprehensive supports target each student's specific learning difference. They include executive function coaching, social pragmatics, advanced educational technology, our own Language Intensive Curriculum, and more!

3



Therapy Dogs — We don't just bring dogs on campus for final exam week. They're here throughout each week to provide our students with support, companionship, and a small reminder of the comforts of home. Our therapy dogs even have their own office hours!

4



No Cut Policy — At LC, every interested student is eligible to participate in our athletic and recreation programs.

5



Tax Savings — Because of our unique educational focus and supports — in and out of the classroom — many families qualify for significant federal medical tax deductions.

6



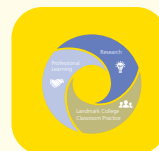
Perspectives in Learning — Most students with a learning difference (LD) don't fully understand how they learn — but not at Landmark. Our innovative first-year course encourages students to read their LD testing, research it, understand it, and articulate it — then present their findings and begin self-advocating.

7



Our **Universal Design** approach gives students an equal opportunity to succeed. Classes are taught in a variety of ways, including visually, auditorily, and kinesthetically.

8



Landmark College's Institute for Research & Training (LCIRT), with its Virtual Reality Lab, Cognitive Neuroscience Library, workshops, and cutting-edge research, is a leader in the field of LD. Students are able to intern with LCIRT and gain valuable experience.

9

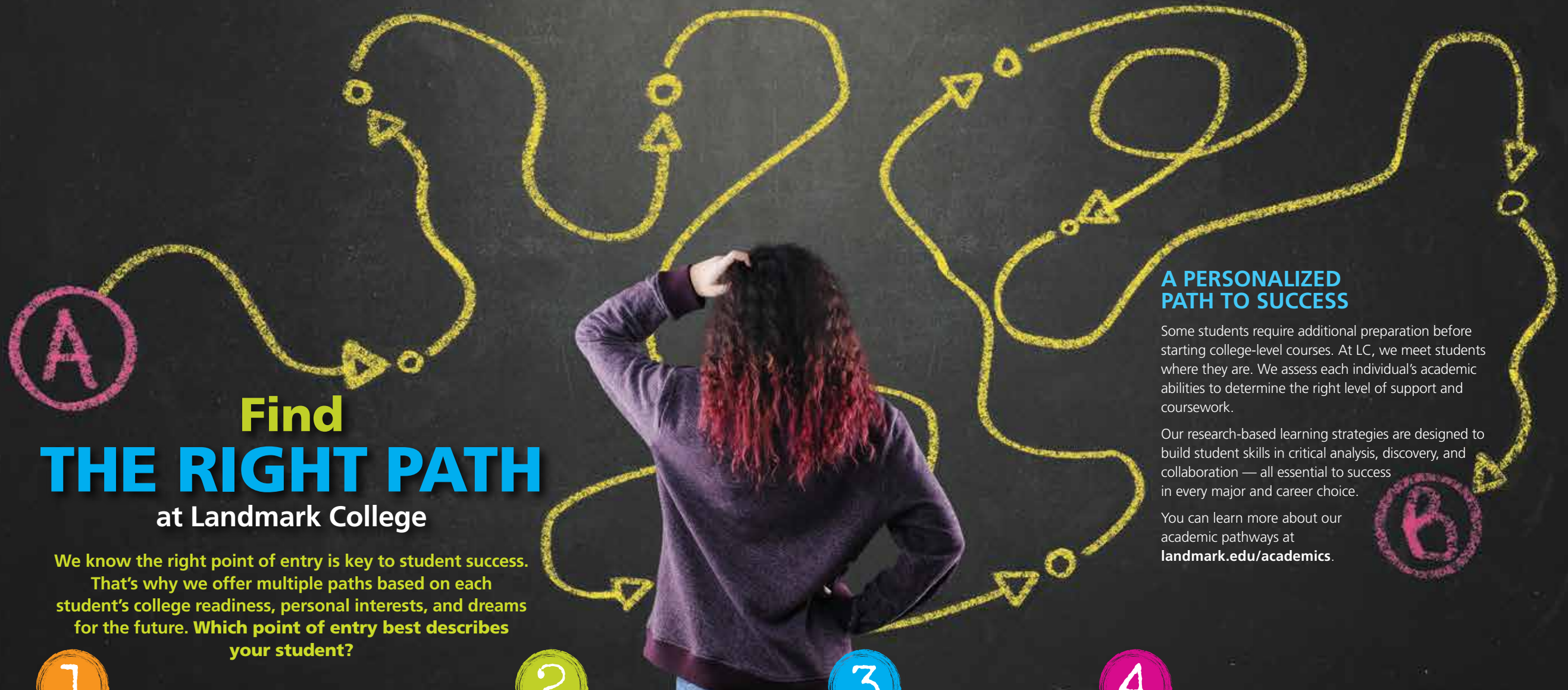


As the nation's first **Neurodiversity Hub**, we work with leading employers worldwide to provide programs, skills, and experience to support neurodivergent students in becoming career-ready and building connections.

10



Study Abroad — At LC, we do travel with a twist: three-week faculty-led trips centered around a theme, journeying to such destinations as Alaska, Australia, Botswana, the Caribbean, Costa Rica, England, Germany, Ireland, Japan, New Zealand, and The Netherlands.



Find THE RIGHT PATH at Landmark College

We know the right point of entry is key to student success. That's why we offer multiple paths based on each student's college readiness, personal interests, and dreams for the future. Which point of entry best describes your student?

A PERSONALIZED PATH TO SUCCESS

Some students require additional preparation before starting college-level courses. At LC, we meet students where they are. We assess each individual's academic abilities to determine the right level of support and coursework.

Our research-based learning strategies are designed to build student skills in critical analysis, discovery, and collaboration — all essential to success in every major and career choice.

You can learn more about our academic pathways at landmark.edu/academics.

1

I'm ready for college.

LC is ready to support you.

We offer a range of majors leading to career-focused associate and bachelor's degrees — and multiple points of entry to help students succeed.

- **Business Studies (A.A.)**
- **Communication & Entrepreneurial Leadership (B.A.)**
- **Computer Science (A.S. & B.S.)**
- **General Studies (A.A.)**
- **Liberal Studies (A.A. & B.A.)**
- **Life Science (A.S. & B.S.)**
Environmental Biology
- **Psychology (B.A.)**
Neurodiversity & Learning
- **Studio Art (B.A.)**

2

I'm not sure what college path is right for me.

Find out with LC's Transition at College (TaC) postgrad/gap track.

After graduating high school, students can build their academic, social, and professional skills while exploring whether a college degree is the right path for them.

3

I need help in my studies.

LC's summer programs and Bridge Experience can make a difference.

High school students, recent graduates, and currently enrolled college students can strengthen their grade point average and develop successful learning strategies through our many summer programs or Bridge Experience.

4

I want to begin my LC experience online.

The full campus experience online!

LC's **College START** is an innovative new online learning experience that lets students earn up to 24 credits in college-level coursework PLUS engage in the best of campus activities and residential living — all online!

Get a head start on college in high school.

With our **Online Dual Enrollment** courses, juniors and seniors can earn up to 12 credits in LC introductory college classes!



OUR FOCUS ON Learn!ng ABILITY

At Landmark College, our learning experience meets students where they are in their academic journey. Here are three distinctive ways we differ from other colleges and universities to help our students discover — and grow — their **Learn!ng ABILITY**.



LD SUPPORTS

MOST COLLEGES have a disability support office that offers basic accommodation services for students who learn differently. Data suggests that fewer than one in five college students seeks out those specialized supports, which are often limited in scope.

AT LANDMARK COLLEGE, every student uses our wraparound support services, which are fully integrated into everything we do — from the curriculum to campus life. Visit landmark.edu/academic-support.

- Our **academic advising model** shows students how to understand and advocate for themselves as learners.
- Our **Drake Center for Academic Support** offers resources in writing, reading, and study skills, and executive coaching, plus special centers in business, computer science, science, math, and educational technology.
- **Outside the classroom**, we offer a host of support services that include counseling and health services • a residential support system • executive function support • pet therapy • educational technology • and social pragmatics services for students with autism, including the acclaimed PEERS® program.



CAMPUS LIFE

MOST COLLEGES don't have campus and residence support programs tailored to the needs of students who learn differently — making it very hard to fit into and get involved in campus culture.

AT LANDMARK COLLEGE, campus life is integral to our college experience. Being part of a campus community that “gets them” means a new kind of freedom for our students. They can relax, express themselves, forge friendships, and get involved as never before in athletics and recreation, the creative arts, entrepreneurship, diversity and inclusion, student leadership, and more. Learn more at landmark.edu/student-life.



EDUCATIONAL TECHNOLOGY

MOST COLLEGES expect students who learn differently to contact the disability office to ask what assistive technology is available. These resources often involve additional fees.

AT LANDMARK COLLEGE, students learn to explore and understand their LD during our innovative first-year course, where they're introduced to educational tools and strategies that support their specific learning needs. All are available free of charge, so students can experiment to discover what tools are most effective for them — from text readers, accessible digital text, and speech-to-text software to graphic organizers and time management tools. Learn more at landmark.edu/ed-tech.

LC alumni are making a difference in virtually every field of endeavor — business, communication, creative arts, education, government, health care, hospitality, social services, and the sciences.

And through partnerships with organizations like EY and JPMorgan Chase, we are working to create greater awareness of and support for the value of neurodiversity in the workplace.

BUILDING FUTURES

As our students discover their **Learn!ngABILITY**, their self-confidence — and dreams — grow. The achievements of our students defy the limitations that society and the workplace place on people with learning differences.

Preparing for the Workplace

Just as Landmark teaches differently in the classroom, LC also prepares students to enter the workforce differently. By focusing on individual learning needs and helping students develop tools for future success, LC puts the foundational building blocks in place for students to land an internship, gain practical experience, and get their first professional job.

Our short-term, intensive **Employment Readiness Experience (ERE)** pairs an on-campus job experience with classroom work that focuses on communication, professional skills, and career exploration. It's a great introduction to the expectations and realities of the workplace while also offering safe and supportive feedback.

Hands-on Experience

Our students engage in rewarding research, entrepreneurial projects, internships, and co-op experiences that prepare them for the world of work, including:

- AT&T
- BioTek Instruments
- Brattleboro Museum & Art Center
- Hasbro, Inc.
- InterContinental Hotels
- Northeast Sports Network
- Prudential Financial, Inc.
- Putney Conservation Commission
- Siemens AG
- Stanley Black & Decker, Inc.
- Vermont Department of Agriculture
- Vermont Genetics Network

You can learn more at landmark.edu/internships.

Continued Academic Success

An impressive nine out of 10 LC students who earn their associate degree go on to pursue a bachelor's degree here at Landmark College or at respected colleges and universities nationwide, including:

- American University
- Columbia University
- George Washington University
- Hofstra University
- Johnson & Wales University
- Savannah College of Art & Design





The LC Value

A nationally ranked education — at a great value.

Nine out of 10 LC students receive some form of financial aid. And, unlike other colleges, there are no “add on” fees for LD support: it’s built into everything that we do — in and out of the classroom.

Here are three ways The LC Value makes our educational experience affordable and accessible:



DID YOU KNOW?

Many families say The LC Value makes their bottom-line costs comparable to — or lower than — that of other colleges.

1 STRONG FINANCIAL SUPPORT

Every year, LC administers nearly \$10 million in federal, state, and generous College-funded financial aid. **LC need-based awards range from \$1,000 to \$40,000.**

Your family can apply for need-based federal, state, and LC financial aid by filing the Free Application for Federal Student Aid (FASFA) at fasfa.gov. (You can apply starting Oct. 1.)

2 UNIQUE TAX INCENTIVES

Because LC serves only students with LDs, many of our families are eligible for a medical tax deduction for tuition and fees — plus other education-related expenses.

3 ADDED OUTSIDE SUPPORT

LC will help your family and student work with your state’s Office of Vocational Rehabilitation (VR) for more LD-related financial aid.

Learn more at landmark.edu/LCValue.

Become Part of Our Family

Families matter at Landmark College. As your student makes the transition to college life, you’ll also learn how to offer the best possible support and encouragement. That’s why we work very hard to keep the lines of communication open with our families.

Landmark Advisory Resource Council

Who better appreciates and understands the impact of a Landmark College education on our students than their families? Members of our Landmark Advisory Resource Council (LARC) include parents and guardians of current students and LC graduates. In addition to serving on college committees, assisting in planning events, and supporting recruitment efforts in their home communities, LARC members offer our “Ask a Landmark Family” service, answering any questions you may have about life and learning at LC. Just fill out the form at landmark.edu/LARC.

Family Programs

When your student enrolls at LC, you can contact Family Programs for assistance whenever you have a question or concern at **802-387-6714** or at mykids@landmark.edu.

Staying Connected

We’ll help you stay connected to LC through our Accepted Student Day and Orientation programs; invitations to campus events, workshops, and productions, including LC’s annual Family Weekend each fall and spring; emails and podcasts; and *Landscape*, our college magazine.

Great Value Colleges

Says innovation is what makes LC the **#1** college for students who learn differently.



Applying to LC

We welcome the opportunity to answer any questions you may have about applying to Landmark College. Our counselors are always available to help your family determine if LC is the right college for your student. You can contact us at **802-387-6718** or admissions@landmark.edu.

- There are two ways to apply online to LC: the **Common Application** (apply.commonapp.org) or the **Landmark College Application** (landmark.edu/apply). Learn more about our requirements and deadlines at landmark.edu/apply.
- Either application can be used for admission to LC's:
 - Traditional bachelor's program
 - Bridge Experience for transfer students
 - Transition at College (a postgraduate gap year option for recent high school graduates)
 - College START (all-online first year program)
- Your family will be assigned a personal admissions counselor to help guide you through the admissions and financial aid process, step by step, and answer any questions you may have about living and learning at LC.
- There are differences in requirements for first-year, international, homeschooled, and transfer students. For a checklist of the documents your student needs to submit, visit landmark.edu/apply.
- Interested in our summer programs for high school and college students? Visit landmark.edu/summer.

“The thing that sold us was when our daughter said, ‘I feel like this could be like home for me.’”

— Lisa Cataldo • Newton, Massachusetts

“Our son grew up at Landmark: he became responsible for himself and he found success — things he had not yet really experienced. It will always signify the turning period in his life.”

— Risa and Rene Garcia • Los Angeles, California

What LC Parents Say!

“As parents of a Landmark student, we learned a lot, too. We learned what neurodiversity is ... and the importance of an integrated residential and academic life.”

— Lisa and Stephen Broomer • Armonk, New York

“For those of us with kids who need the Landmark environment to be successful, it's like we've discovered the Rosetta Stone. They're able to learn in the way you've always wanted them to — and the way they've always dreamed they would.”

— Milt and Maggie Gonzales • Berkeley Heights, New Jersey

“What interested me most was the relationship between the professors and the students. They really do get to know each student, look at what that student is dealing with, and work with them.”

— Cheryl Rose • Springfield, Virginia