

## VISITING LANDMARK

There are many ways students and families can visit Landmark College — online and on campus. Visit our website to explore our open houses, daily visits, and more at [landmark.edu/visit](https://landmark.edu/visit).



## APPLYING TO LANDMARK

Landmark College exclusively serves students who learn differently.

Your students can apply to LC using the **Common Application** ([apply.commonapp.org](https://apply.commonapp.org)) or apply online at [landmark.edu/apply](https://landmark.edu/apply).



For questions and support, we invite educators to contact us at **802-387-6718** or [admissions@landmark.edu](mailto:admissions@landmark.edu).



**LANDMARK**  
COLLEGE

**The College for Students Who Learn Differently**

19 River Road South | Putney, VT 05346



LCEG09.21

# Learn!ng**ABILITY**



**INFORMATION**  
*for* **EDUCATORS**



**LANDMARK**  
COLLEGE

**DYSLEXIA • ADHD • AUTISM • EXECUTIVE FUNCTION CHALLENGES**



# Learn!ngABILITY

There's a reason educators think of Landmark College first when it comes to students who learn differently.

No other college compares to Landmark College's experience and outcomes in preparing neurodiverse students for academic and professional success.

Since 1985, LC has pioneered the teaching of students with **dyslexia, ADHD, autism, and executive function challenges**. Our academic, extracurricular, and support programs enable LC students to find confidence and a sense of community — and the resources they need to succeed.

We know how to help students who learn differently discover their **Learn!ngABILITY** — and how to support educators like you in your efforts to serve them.

For the last three consecutive years, LC has been named **#1 Best Undergraduate Teaching College** and **#1 in Innovation–North** in *U.S. News & World Report's* Regional Colleges Ratings



## THE LC VALUE

We are committed to making our education affordable and accessible through our generous scholarships and financial aid programs. Learn how at [landmark.edu/LCvalue](https://landmark.edu/LCvalue).





Landmark was founded in 1985 as the first college dedicated to serving students who learn differently.



The LC Value is our commitment to affordability and accessibility. Our generous financial aid makes our costs comparable to many other colleges.



Half of our students transferred to LC in search of a better college experience.



Nine out of 10 LC students who earn an associate degree go on to pursue a bachelor's degree.



# HOW LANDMARK PROMOTES Learn!ngABILITY

We are a leader in advocating for and supporting neurodivergent learners.

Our unique model helps students recognize, understand, and leverage their strengths as neurodiverse individuals — allowing them to discover their **Learn!ngABILITY**.

## Our wraparound services are offered in and out of the classroom.

Our comprehensive network of services and resources begins with a one-to-one relationship with an academic advisor. In addition to classes, students participate in weekly advising sessions and workshops with fellow students, faculty, and advisors. Individualized supports are offered in:

- Reading and writing
- Study skills
- Executive function coaching
- Social pragmatics services for students with autism, including the renowned PEERS® program

## We excel at tailoring technology to each student's learning needs.

We provide support to help students find and use the right technology for their learning needs — from text-to-speech and speech-to-text software to applications that support time management, creativity, organizational skills, active reading, research skills, and test preparation.

## Our learning environment is so powerful that the IRS recognizes it for medical tax benefits.

Because we serve only students with diagnosed learning differences, LC's tuition and fees — and other related educational expenses — may qualify for a significant medical tax deduction for families.

## We actively promote a community in which no student walks alone.

As a community and a college, we value diversity in all its forms. Our Centers for Diversity and Inclusion are living proof, providing welcoming spaces and creative programming.

- Center for Women and Gender
- Rise Up Center (for Students of Color)
- Stonewall Center (for LGBTQ+ Students)

## Students say we've "gone to the dogs" — and love us for doing so.

Owned and handled by LC staff members, our team of therapy dogs interacts with students on a daily basis. (They even have office hours!)

## We are isolated by intent — but give our students the world.

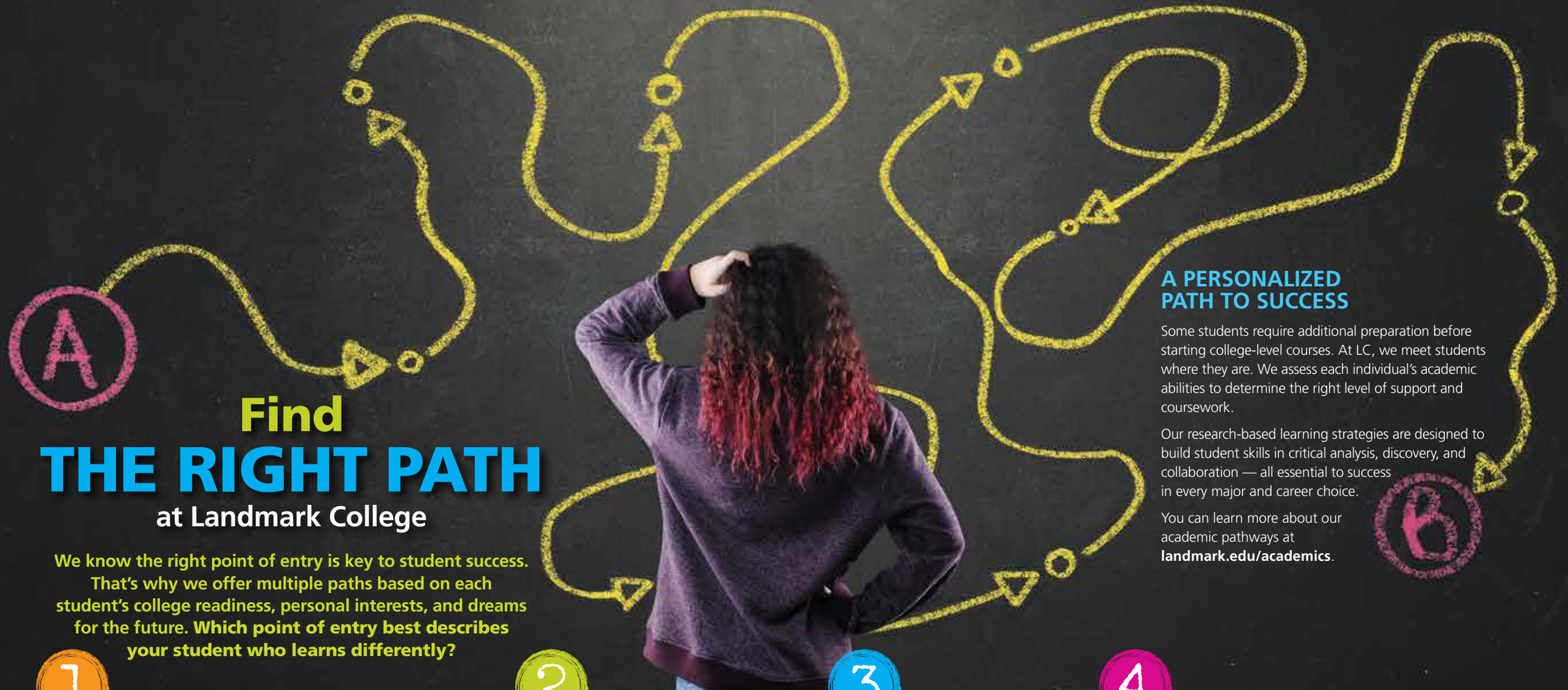
Our 125-acre self-contained campus helps our students focus on their studies without distraction in a learning environment that emphasizes safety. But LC is a car drive away from Boston or New York City — and southern Vermont offers unforgettable recreation and cultural opportunities. And our innovative Study Abroad program connects students to countries and continents worldwide.

## We are making a difference in the world of work.

Landmark College is at the forefront of working with leading employers nationwide in developing their neurodiversity programs. And we are the first college in the United States to be named a "Neurodiversity Hub."

Learn 10 more ways Landmark College differs from other LD support programs at [landmark.edu/10Ways](https://landmark.edu/10Ways).





A

B

# Find THE RIGHT PATH at Landmark College

We know the right point of entry is key to student success. That's why we offer multiple paths based on each student's college readiness, personal interests, and dreams for the future. Which point of entry best describes your student who learns differently?

## A PERSONALIZED PATH TO SUCCESS

Some students require additional preparation before starting college-level courses. At LC, we meet students where they are. We assess each individual's academic abilities to determine the right level of support and coursework.

Our research-based learning strategies are designed to build student skills in critical analysis, discovery, and collaboration — all essential to success in every major and career choice.

You can learn more about our academic pathways at [landmark.edu/academics](https://landmark.edu/academics).

1

### I'm ready for college.

#### LC is ready to support you.

We offer a range of majors leading to career-focused associate and bachelor's degrees — and multiple points of entry to help students succeed.

- **Business Studies (A.A.)**
- **Communication & Entrepreneurial Leadership (B.A.)**
- **Computer Science (A.S. & B.S.)**
- **General Studies (A.A.)**
- **Liberal Studies (A.A. & B.A.)**
- **Life Science (A.S. & B.S.)**  
*Environmental Biology*
- **Psychology (B.A.)**  
*Neurodiversity & Learning*
- **Studio Art (B.A.)**

2

### I'm not sure what college path is right for me.

#### Find out with LC's Transition at College (TaC) postgrad/gap track.

After graduating high school, students can build their academic, social, and professional skills while exploring whether a college degree is the right path for them.

3

### I need help in my studies.

#### LC's summer programs and Bridge Experience can make a difference.

High school students, recent graduates, and currently enrolled college students can strengthen their grade point average and develop successful learning strategies through our multiple summer programs or Bridge Experience.

4

### I want to begin my LC experience online.

#### The full campus experience online!

LC's **College START** is an innovative new online learning experience that lets students earn up to 24 credits in college-level coursework PLUS engage in the best of campus activities and residential living — all online!

#### Get a head start on college in high school.

With our **Online Dual Enrollment** courses, juniors and seniors can earn up to 12 credits in LC introductory college classes!





## SUMMER EXPERIENCES AT LANDMARK COLLEGE

For many students, their first introduction to Landmark College is one of our summer programs. LC offers summer programming for high school students, recent high school graduates, and college students.

[Learn more about all our summer options at landmark.edu/summer.](https://landmark.edu/summer)

“I arrived in Putney and discovered something incredible. On a beautiful New England campus, I found a community of people who got it.”

— Aaron Kahn-Bork '13  
Writing in Attention magazine on  
LC's High School Program



## High School Summer Program

### For Rising High School Juniors and Seniors

Rising high school juniors and seniors will be introduced to skills and strategies to help them prepare for college-level work. During this three-week program, students will experience a learning community focused on their success. The **Social Pragmatics** track is designed for students needing additional support to make friends, adapt to new sensory environments, and find community.



## Summer College Readiness Program

### For College-Bound High School Graduates

Recent high school graduates will be immersed in a living and learning experience that offers a taste of college-level work and the challenges they will face as new college students. This two-week program focuses on preparing students as they transition to their crucial first semester of college in the fall.

## Summer Bridge Experience

### For Current College Students

A five-week program for bright and talented students from colleges and universities around the country who study and work hard, but struggle to find solid academic success.

## 5-Day Boot Camp (Online)

### For New and Continuing College Students

An intensive online program for new and current college students who want to be better prepared and more confident as they start their fall semester.

### Find the Right Fit for Your Students

Our summer programs do not require a diagnosed learning disability. For assistance in determining the right summer program for your students, call **802-387-6885** or email [summer@landmark.edu](mailto:summer@landmark.edu).





## LC ONLINE

### High School Online Dual Enrollment

College Preparedness and Transition

[landmark.edu/dual](https://landmark.edu/dual) • [online@landmark.edu](mailto:online@landmark.edu) • 802-387-6881

LC's online college courses use universal design and a scaffolding approach to instruction and support. This program is offered in collaboration with individual high schools or districts to support rising high school juniors and seniors in a successful transition to college. The program also enrolls homeschooled and gap year students.

This highly personalized program focuses on empowering students to:

- Develop and hone their critical academic skills
- Explore their academic interests
- Earn transferrable college credits while in high school

### College START

[landmark.edu/CollegeSTART](https://landmark.edu/CollegeSTART)

College START (Success – Transition – Awareness – Results – Transformation) is for college-ready students who want the full campus experience in an online setting.

It combines college-level coursework plus rich virtual residential life activities. The curriculum includes required and elective courses that are standard for the first year of college.

### 5-Day Summer Boot Camp (Online)

[landmark.edu/summer](https://landmark.edu/summer)

An intensive online program for new and current college students who want to be better prepared and more confident as they start their fall semester.



## PROFESSIONAL DEVELOPMENT FOR EDUCATORS

[landmark.edu/LCIRT](https://landmark.edu/LCIRT)

### Landmark College Institute for Research & Training

The Landmark College Institute for Research & Training (LCIRT) was established in 2001 to pioneer LD research, develop innovative strategies, and improve learning outcomes.

To support the needs of educators, LCIRT offers the following innovative professional development programs. Each is **research-based**, **classroom-tested**, and **universally designed** for educators and disability services staff:

- **LCIRT webinars** feature up-to-date information and research-based practices for supporting students with learning differences (LD) such as dyslexia, ADHD, or autism
- A five-course **Professional Certificate** provides online postbaccalaureate professional development (may be taken for graduate credit)
- Customized online or in-person **professional development workshops** — from revamping your curriculum to creating on-site, sustainable professional development

### Professional Visit Days (PVD)

[landmark.edu/PVD](https://landmark.edu/PVD)

This two-day campus immersion experience enables educators to explore our campus and hear from LC students and faculty. Includes a travel stipend and accommodations/meals.

### Summer Institute for Educators

[landmark.edu/LCSI](https://landmark.edu/LCSI)

These annual opportunities feature a keynote presentation, plenary presentations, a student panel, and rich networking opportunities.